

# LOT 288 THREE BEDROOM TOWNHOUSES

## Specification

### Living and dining room

- Wall – painted stucco
- Flooring – hydraulic tile

### Bedrooms

- Wall – painted stucco
- Flooring – wood

### Kitchen

- Wall – composite stone and painted stucco
- Flooring - hydraulic tile
- Furniture – laminate and composite stone
- Appliances:
  - Microwave oven
  - Main oven
  - Ceramic hob
  - Extractor fan
  - Refrigerator
  - Dishwasher

### Bathrooms

#### Wc

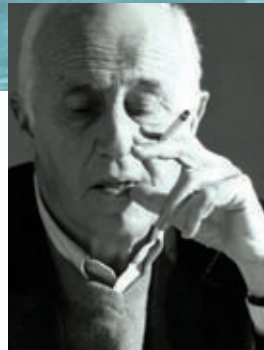
- Wall – marble and painted stucco
- Flooring - hydraulic tile
- Stone wash basin
- Sanitaryware by GSI

#### En-suite bathroom

- Wall – terracotta tile and painted stucco
- Flooring - wood
- White ceramic wash basin
- Sanitaryware by GSI

### Miscellaneous

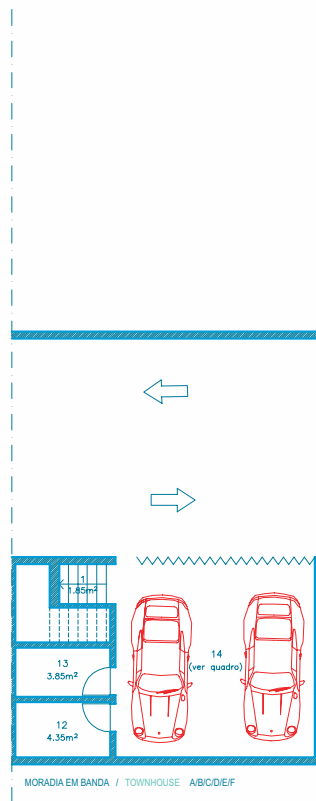
- Air conditioning
- Cable TV infrastructure
- Security alarm
- Broadband internet infrastructure
- Communal swimming pool for each lot
- Automatic roof irrigation system
- Fireplace or stove



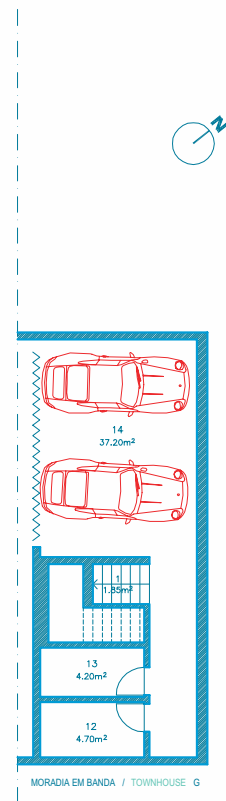
“The architectural image is configured beyond the volumetric articulation by facades where glass is the more prominent material, all complementing the roofings which are covered by vegetable elements.”

**Alcino Soutinho**  
Architect

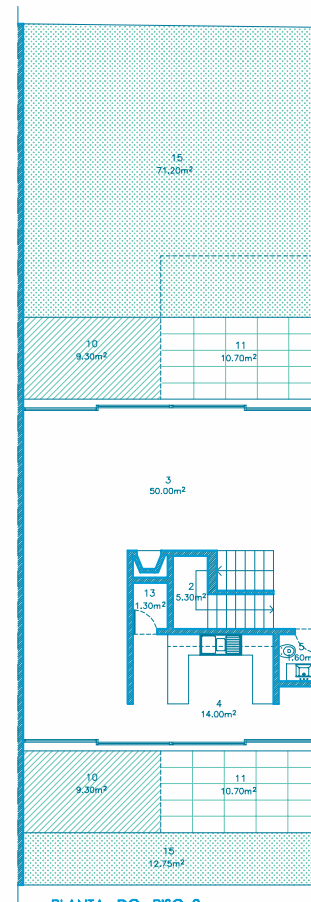
Photographs are illustrative only. Details and specification may be subject to variation and should not form part of any contract.



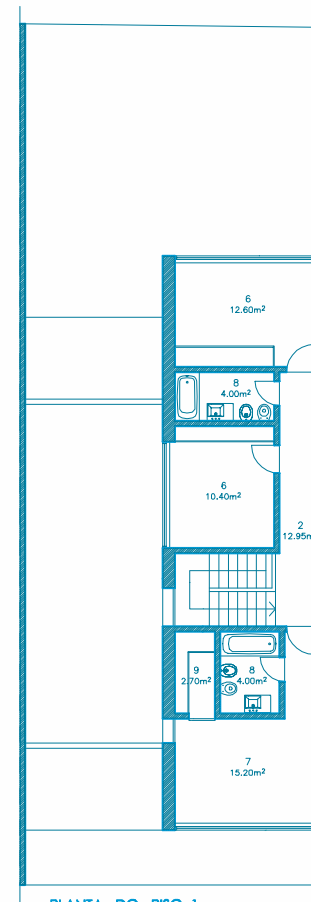
PLANTA DO PISO -1



MORADIA EM BANDA / TOWNHOUSE G

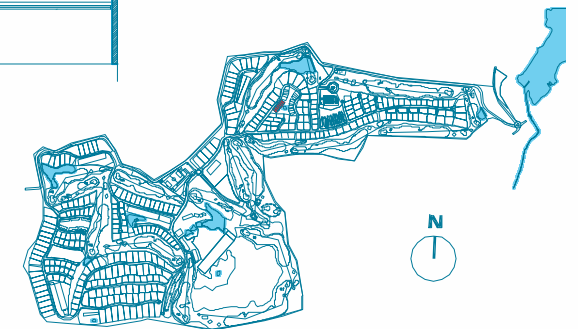


PLANTA DO PISO 0



PLANTA DO PISO 1

1. HALL
2. HALLWAY/STAIRS
3. LIVING AND DINING ROOM
4. KITCHEN
5. WC
6. BEDROOM
7. SUITE
8. BATHROOM
9. DRESSING ROOM
10. TERRACE
11. COVERED TERRACE
12. LAUNDRY
13. STOREROOM
14. GARAGE
15. GARDEN



Architectural plan not yet adapted to engineering plans. Subject to changes.