

LOTS 150, 151, 169, 170, 264-266

THREE BEDROOM VILLAS

Specification

Living room, dining room

- Wall – painted stucco
- Flooring – slate

Bedrooms

- Wall – painted stucco
- Flooring – slate

Kitchen

- Wall – composite stone and painted stucco
- Flooring – slate
- Furniture – birch faced and composite stone
- Appliances:
 - Microwave oven
 - Main oven
 - Ceramic hob
 - Extractor fan
 - Refrigerator
 - Dishwasher

Bathrooms

Wc

- Wall – painted stucco
- Flooring – slate
- Stone wash basin
- Sanitaryware by GSI

Main en-suite bathroom

- Wall – marble and painted stucco
- Flooring – slate
- White ceramic wash basin
- Sanitaryware by GSI

Bathroom

- Wall – tile and painted stucco
- Flooring – slate
- White ceramic wash basin
- Sanitaryware by GSI

Miscellaneous

- Gas central heating
- Cable TV infrastructure
- Security alarm
- Broadband internet infrastructure
- Pre-installation for air conditioning
- Automatic roof irrigation system
- Fireplace or stove

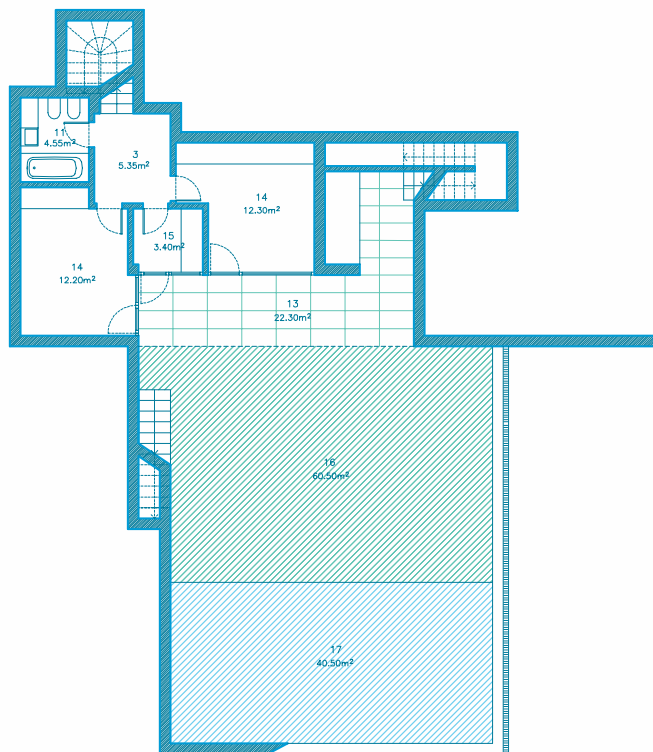


“The relation of the house with the East is considered very important given that it is in this direction that there is a connection with Óbidos lagoon and where the view is oriented in a natural way, constitutes an organised section, interprets and makes sense within the geographical position.”

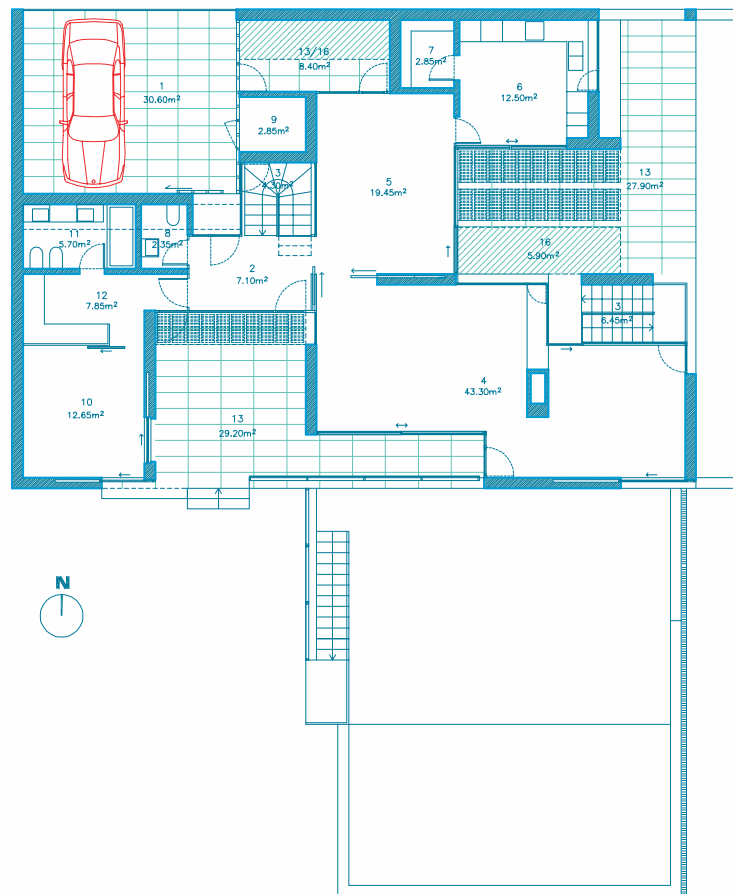
Josep Llinás
Architect

Photographs are illustrative only. Details and specification may be subject to variation and should not form part of any contract.

LOTS 150, 151, 169, 170, 264-266 – THREE BEDROOM VILLAS

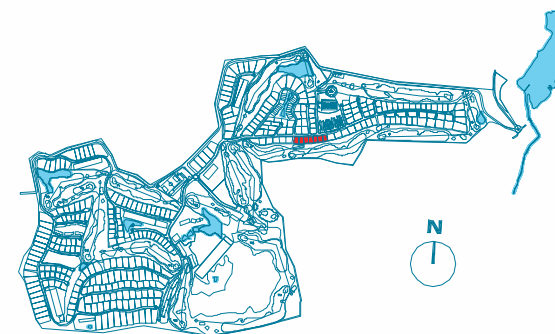


PLANTA DO PISO -1



PLANTA DO PISO 0

1. COVERED PARKING LOTS
2. HALL
3. HALLWAY/STAIRS
4. LIVING ROOM
5. DINING ROOM
6. KITCHEN
7. PANTRY
8. WC
9. STOREROOM
10. SUITE
11. BATHROOM
12. DRESSING ROOM
13. COVERED TERRACE
14. BEDROOM
15. LAUNDRY
16. TERRACE
17. SWIMMING POOL



Architectural plan not yet adapted to engineering plans. Subject to changes.