

LOT 286 TWO BEDROOM TOWNHOUSES

Specification

Living and dining room

- Wall – painted stucco
- Flooring – terracotta tile

Bedrooms

- Wall – painted stucco
- Flooring – terracotta tile

Kitchen

- Wall – composite stone and painted stucco
- Flooring – composite stone and terracotta tile
- Furniture – laminate and composite stone
- Appliances:
 - Microwave oven
 - Main oven
 - Ceramic hob
 - Extractor fan
 - Refrigerator
 - Dishwasher

Bathrooms

Wc

- Wall – tile and painted stucco
- Flooring – terracotta tile
- Stone wash basin
- Sanitaryware by Catalano

En-suite bathrooms

- Wall – tile and painted stucco
- Flooring – terracotta tile
- White ceramic wash basin
- Sanitaryware by Catalano

Miscellaneous

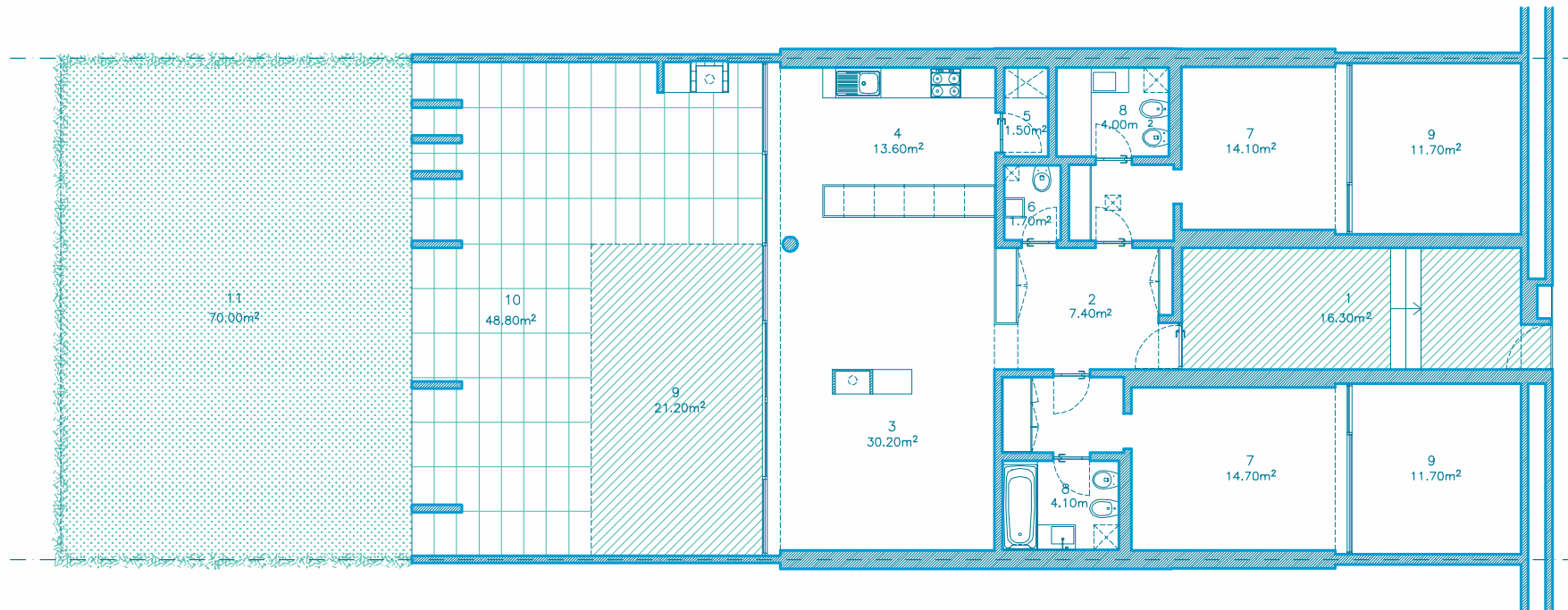
- Air conditioning
- Cable TV infrastructure
- Security alarm
- Broadband internet infrastructure
- Communal swimming pool for each lot
- Automatic roof irrigation system
- Fireplace or stove



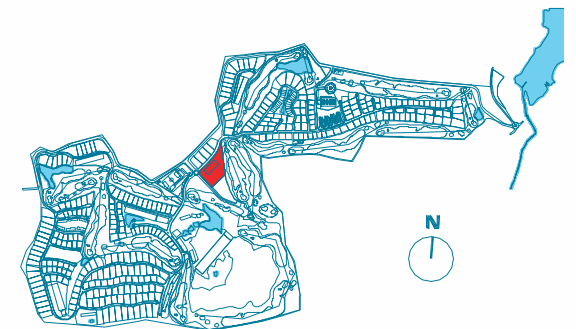
“The roof coverings are vegetable and the courtyards are partially shadowed by the plants growing on the covering and flowerbeds/boxes.”

Nuno Graça Moura
Architect

Photographs are illustrative only. Details and specification may be subject to variation and should not form part of any contract.



- | | |
|---------------------------|---------------------|
| 1. ENTRANCE TERRACE | 7. SUITE |
| 2. HALL | 8. BATHROOM |
| 3. LIVING AND DINING ROOM | 9. TERRACE |
| 4. KITCHEN | 10. COVERED TERRACE |
| 5. LAUNDRY | 11. GARDEN |
| 6. WC | |



Architectural plan not yet adapted to engineering plans. Subject to changes.