

LOTS 333, 336, 337, 340, 341, 344

FOUR BEDROOM VILLAS

Specification

Living and dining room

- Walls – painted stucco
- Flooring – wood and marble

Bedrooms

- Walls – painted stucco
- Flooring – wood

Kitchen

- Wall – tile and painted stucco
- Flooring – composite stone
- Furniture – birch faced and composite stone
- Appliances:
 - Microwave oven
 - Main oven
 - Ceramic hob
 - Extractor fan
 - Refrigerator
 - Dishwasher

Bathrooms

Wc

- Wall – marble and painted stucco
- Flooring – marble
- Stone wash basin
- Sanitaryware by Catalano

Main en-suite bathroom

- Wall – tile and painted stucco
- Flooring – marble
- White ceramic wash basin
- Sanitaryware by Catalano

Bathroom

- Wall – tile and painted stucco
- Flooring – marble
- White ceramic wash basin
- Sanitaryware by Catalano

Miscellaneous

- Gas central heating
- Cable TV infrastructure
- Security alarm
- Broadband internet infrastructure
- Pre-installation for air conditioning
- Automatic roof irrigation system
- Fireplace or stove

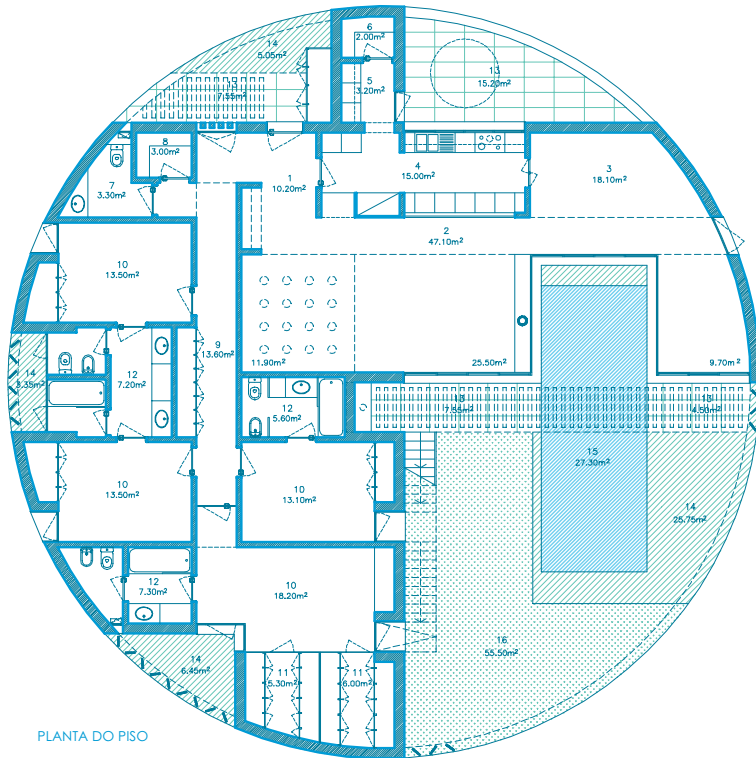


“The flat vegetable covered roofs served as a starting point for the design of a terrace with access from the central courtyard to the ‘L’. It contains a small solarium placed slightly lower than the house and a mirrored water pool and when the ‘Music Room’ is covered will illuminate it from above through a series of small skylights that will sense the undulation of the water (at night electric lights will create the same sort of effect and reflections).”

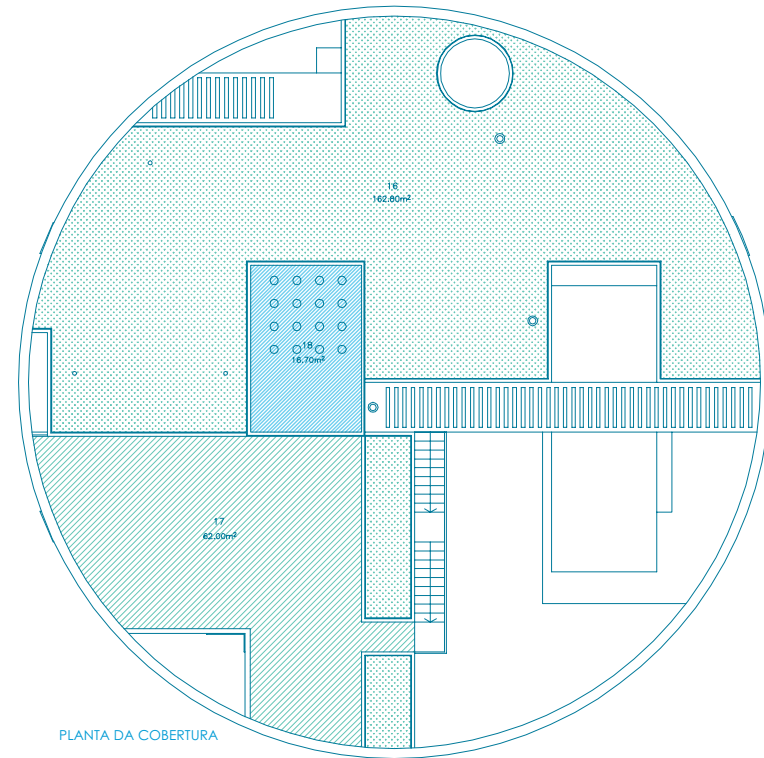
Manuel Graça Dias and Egas Vieira

Architects

Photographs are illustrative only. Details and specification may be subject to variation and should not form part of any contract.



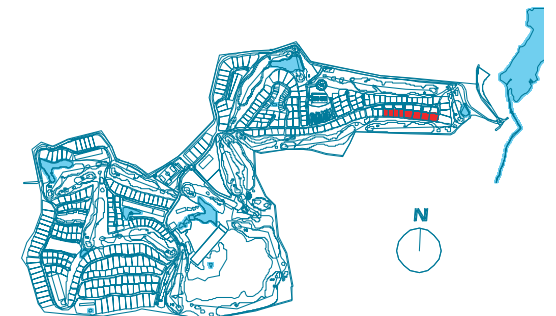
PLANTA DO PISO



PLANTA DA COBERTURA



- | | | |
|----------------|-------------------|---------------------|
| 1. HALL | 7. WC | 13. COVERED TERRACE |
| 2. LIVING ROOM | 8. STORE ROOM | 14. TERRACE |
| 3. DINING ROOM | 9. HALLWAY | 15. SWIMMING POOL |
| 4. KITCHEN | 10. SUITE | 16. GARDEN |
| 5. LAUNDRY | 11. DRESSING ROOM | 17. SOLARIUM |
| 6. PANTRY | 12. BATHROOM | 18. REFLECTING POOL |



Architectural plan not yet adapted to engineering plans. Subject to changes.